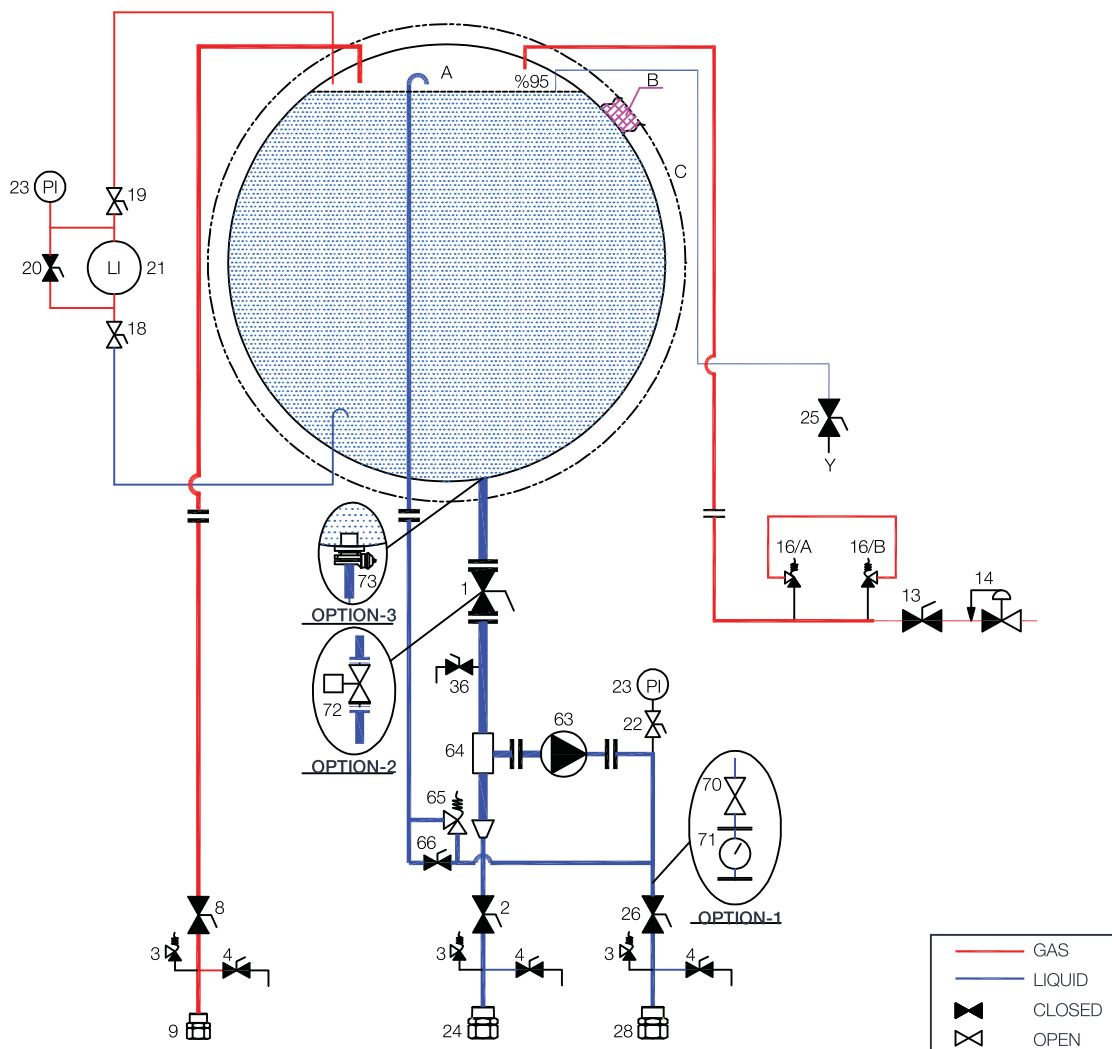


CO₂ TANKS FOAM INSULATED TRANSPORT TANKS

CO₂ Transport Tanks P&ID



NOMENCLATURE

| | | | | | |
|------|----------------------------------|----|------------------------------|-------------------------------------------------|----------------------------------------------|
| 1 | Liquid fill valve | 22 | Manometer valve | Option-1 Flow Meter System | |
| 2 | Bottom fill valve | 23 | Manometer | 70 | Flow meter isolating valve |
| 3 | Thermal relief valve | 24 | Fill connection | 71 | Flow meter |
| 4 | Purge valve | 25 | Try cock valve | Option-2 Main Liquid Valve with Actuator | |
| 8 | Vapor equalizing valve | 26 | Liquid withdrawal valve | 72 | Main liquid valve with actuator instead of 1 |
| 9 | Vapor equalizing connection | 28 | Liquid withdrawal connection | Option-3 Internal Valve | |
| 13 | Regulator isolating valve | 36 | Analysis liquid valve | 73 | Internal valve |
| 14 | Back pressure regulator | 63 | Pump | A | Inner vessel |
| 16/A | Inner vessel safety relief valve | 64 | Filter | B | Foam insulation |
| 16/B | Inner vessel safety relief valve | 65 | Automatic by-pass valve | C | Outer jacket |
| 18 | High pressure shut off valve | 66 | Manual by-pass valve | | |
| 19 | Low pressure shut off valve | | | | |
| 20 | Equalizing valve | | | | |
| 21 | Level indicator | | | | |

CO₂ TANKS VACUUM INSULATED STORAGE TANKS

VACUUM INSULATED CO₂ TANKS

| | |
|---------------------------------|------------------------------------------------|
| DESIGN CODE | EN 13458 - PED 2014/68/EU |
| MAX. ALLOWABLE WORKING PRESSURE | 22 bar |
| DESIGN TEMPERATURE | -196°C |
| INNER VESSEL MATERIAL | Stainless Steel (According to EN 10028-7) |
| OUTER VESSEL MATERIAL | Carbon Steel (According to EN 10025/EN10028-3) |
| INSULATION | Perlite & Vacuum |

22 BAR VACUUM INSULATED CO₂ STORAGE TANKS

| MAWP | Gross Capacity | Net Capacity (%95 Filling) | Daily Evap. Rate (CO ₂) | ØD | B | L | W | H | Empty Weight |
|------|----------------|----------------------------|-------------------------------------|------|-------|-------|------|------|--------------|
| bar | liters | liters | % / day | mm | mm | mm | mm | mm | kg |
| 22 | 25000 | 23750 | 0.12 | 2750 | 7740 | 8490 | 3030 | 2870 | 14000 |
| | 30000 | 28500 | 0.11 | 2750 | 8880 | 9630 | 3030 | 2870 | 17000 |
| | 35000 | 33250 | 0.10 | 2750 | 10130 | 10880 | 3030 | 2870 | 19500 |
| | 43000 | 40850 | 0.10 | 2500 | 14110 | 14560 | 2770 | 2700 | 23500 |
| | 50000 | 47500 | 0.10 | 2650 | 14200 | 14650 | 2920 | 2700 | 26000 |

