

# CO<sub>2</sub> TANKS FOAM INSULATED TRANSPORT TANKS

## TRANSPORT TANKS

DESIGN CODE	EN 14398 / EN 14025 + ADR	
INNER VESSEL MATERIAL	Duplex Stainless Steel	Carbon Steel (EN 10028-3)
MAX. ALLOWABLE WORKING PRESSURE	23 bar	24 Bar
DESIGN TEMPERATURE	-40 / +50°C	
INSULATION	Foam Insulation, with Aluminium Jacket	

## SEMI TRAILER

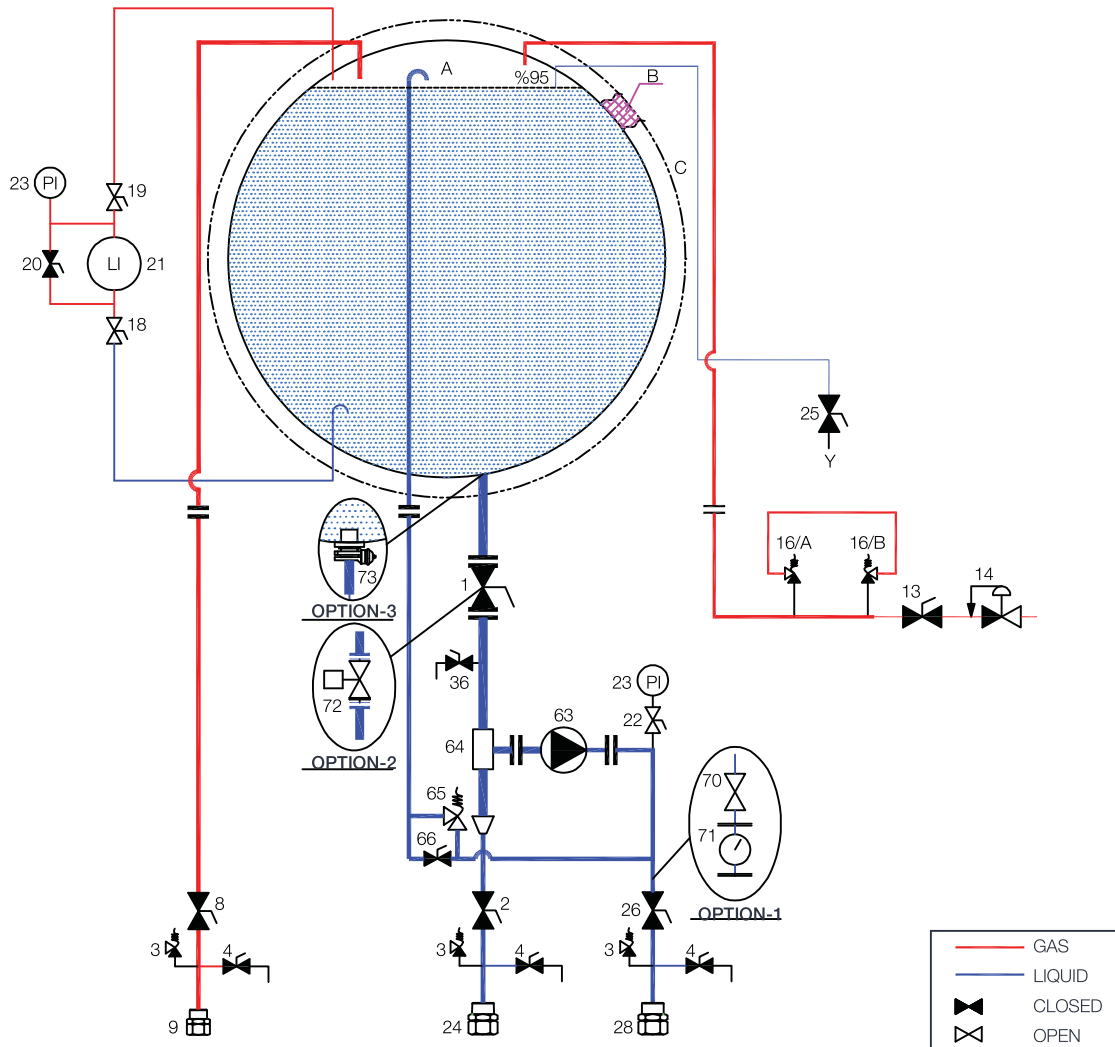
INNER VESSEL MATERIAL		Duplex Stainless Steel			Carbon Steel		
TANK VOLUME	m <sup>3</sup>	<b>20</b>	<b>23</b>	<b>25</b>	<b>20</b>	<b>23</b>	<b>24,5</b>
NET WATER CAPACITY	lt	20000	23100	24750	20000	23030	24530
TANK EMPTY WEIGHT	kg	9200	9700	10200	10000	10700	10900
LIQUID (0.5 barg)	kg	19380	22380	23980	19380	22300	23770
TOTAL	kg	35580	39100	41200	36380	40000	41670

\*Volume may vary according to local traffic regulations, truck model and capacity.



# CO<sub>2</sub> TANKS FOAM INSULATED TRANSPORT TANKS

## CO<sub>2</sub> Transport Tanks P&ID



### NOMENCLATURE

1	Liquid fill valve	22	Manometer valve	<b>Option-1 Flow Meter System</b>	
2	Bottom fill valve	23	Manometer	70	Flow meter isolating valve
3	Thermal relief valve	24	Fill connection	71	Flow meter
4	Purge valve	25	Try cock valve	<b>Option-2 Main Liquid Valve with Actuator</b>	
8	Vapor equalizing valve	26	Liquid withdrawal valve	72	Main liquid valve with actuator instead of 1
9	Vapor equalizing connection	28	Liquid withdrawal connection	<b>Option-3 Internal Valve</b>	
13	Regulator isolating valve	36	Analysis liquid valve	73	Internal valve
14	Back pressure regulator	63	Pump	A	Inner vessel
16/A	Inner vessel safety relief valve	64	Filter	B	Foam insulation
16/B	Inner vessel safety relief valve	65	Automatic by-pass valve	C	Outer jacket
18	High pressure shut off valve	66	Manual by-pass valve		
19	Low pressure shut off valve				
20	Equalizing valve				
21	Level indicator				